

Land adjoining The Whalebones Community Workshop

Date: Thursday 7th June 2018

whalebones-consultation.co.uk



Today's agenda

Land adjoining The Whalebones

- Welcome
- Aims for today
- Colin Campbell (Hill): introduction and planning update
- Alexis Butterfield (PTE): design and architecture
- Workshop sessions
 - Landcape and character
 - Public open space
 - Housing layout and design
 - Access and parking
- Close: 8:30pm

Aims for today



-
- Inform the local community about the evolving proposals for Land adjoining The Whalebones
 - Explain our current thinking, and test work we have done to date
 - Seek feedback and local knowledge through guided workshop sessions to help us further develop our proposals

Design and architecture

Presenter: Alexis Butterfield, PTE Architects

- Site overview
- New publicly accessible open space
- New home for Barnet Guild of Artists and Barnet Beekeepers
- Areas for new housing
- Routes across the site (pedestrian)
- Landscape-led masterplan
- Architecture and design precedents
- Road vehicle access options
- Artist and beekeeper building: concept and design

The site



Site plan as existing



New publicly accessible open space



New home for Barnet Guild of Artists & Barnet Beekeepers



Areas for new homes



Routes across the site



Landscape-led masterplan



Precedents

New Ground, Union St, Barnet



Precedents

Connaught Gardens, Highgate



Precedents

Woodside Square, Muswell Hill



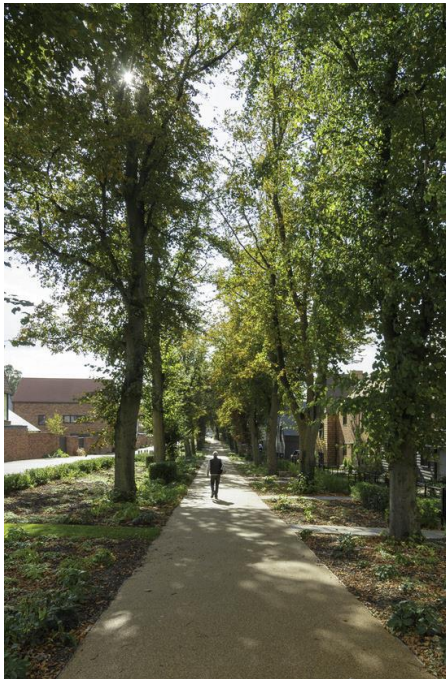
Precedents

Woodside Square, Muswell Hill



Precedents

The Avenue, Saffron Walden



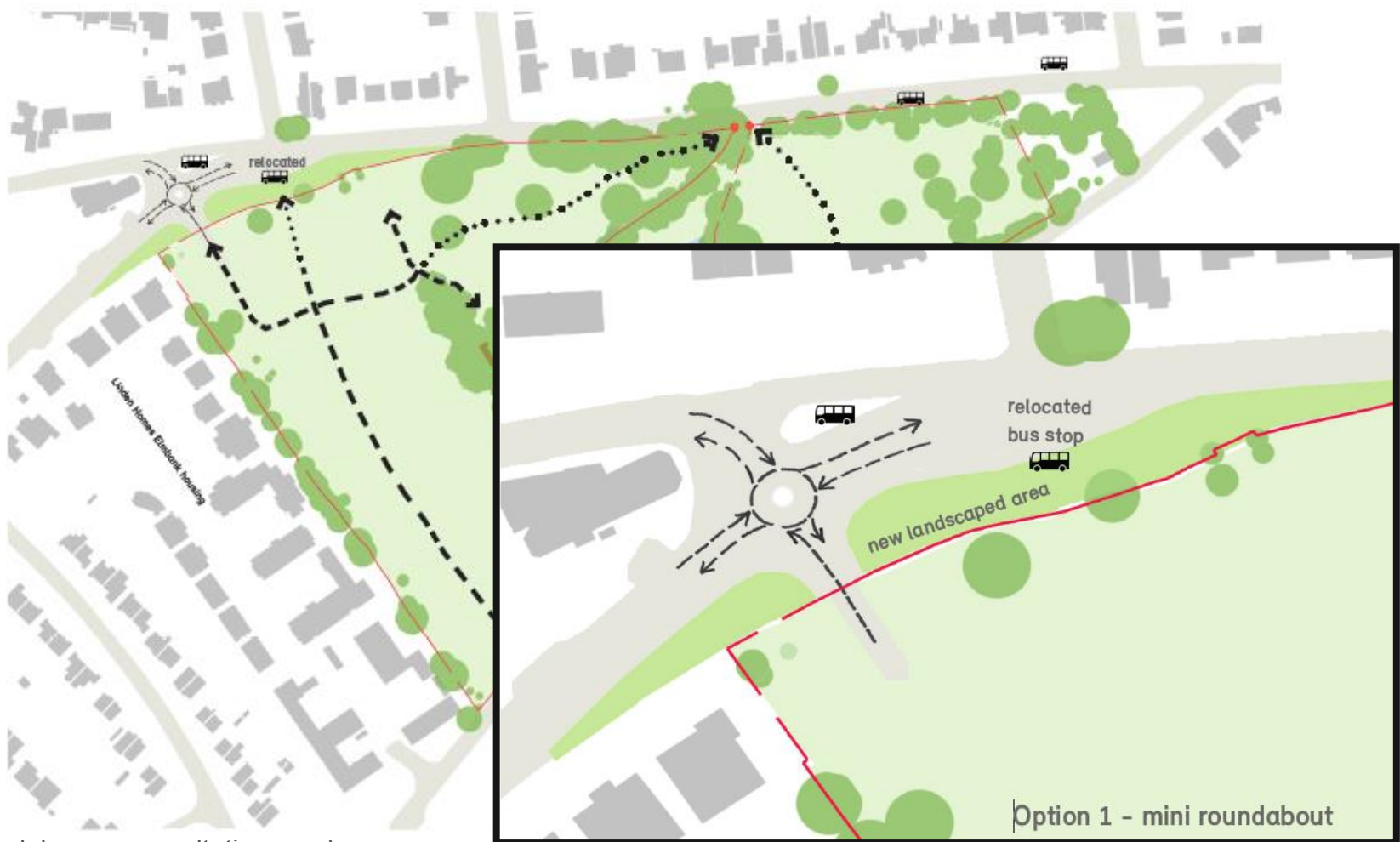
Precedents

The Avenue, Saffron Walden



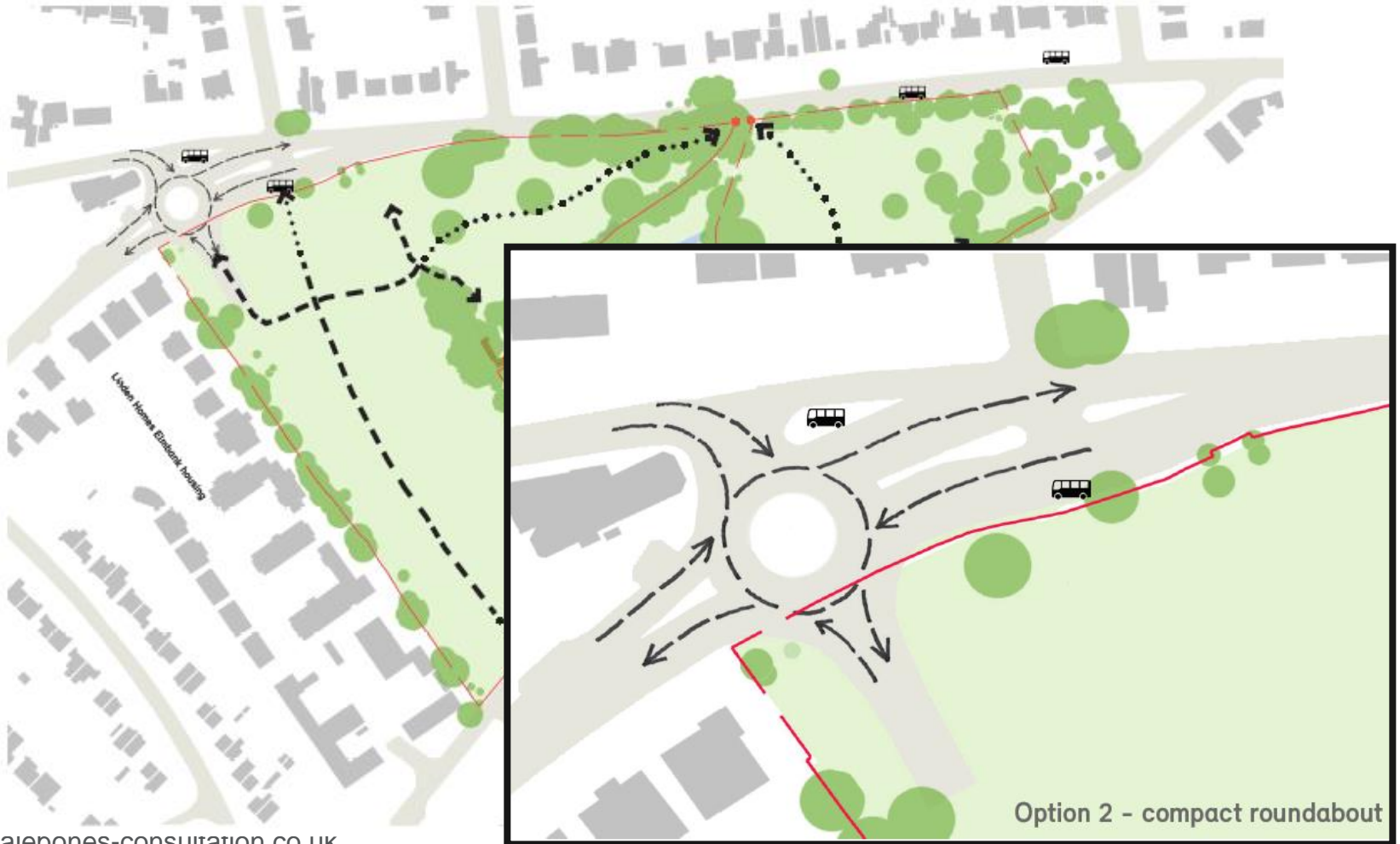
Access to the site

Option 1 – mini-roundabout



Access to the site

Option 2 – compact roundabout



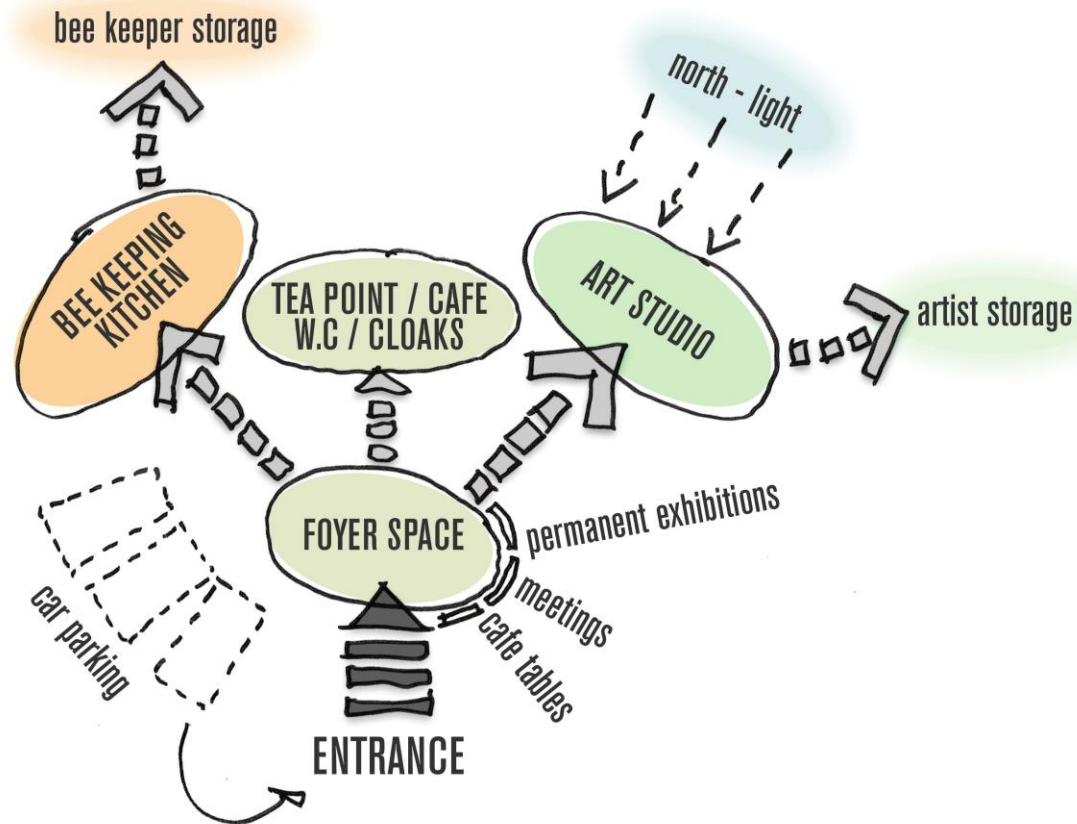
Access to the site

Option 3 – signalised junction



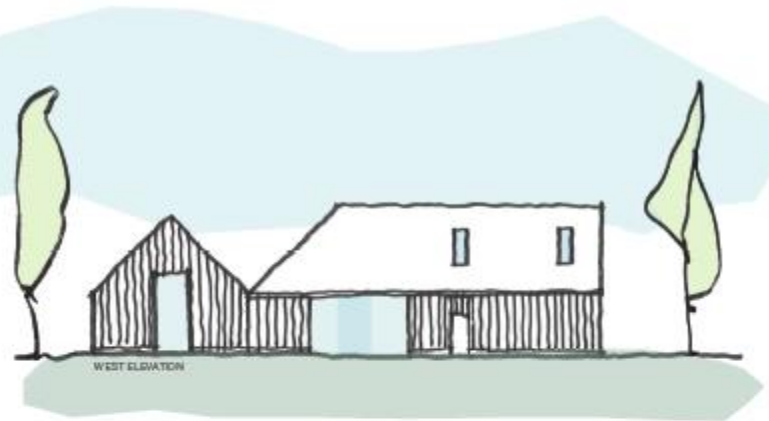
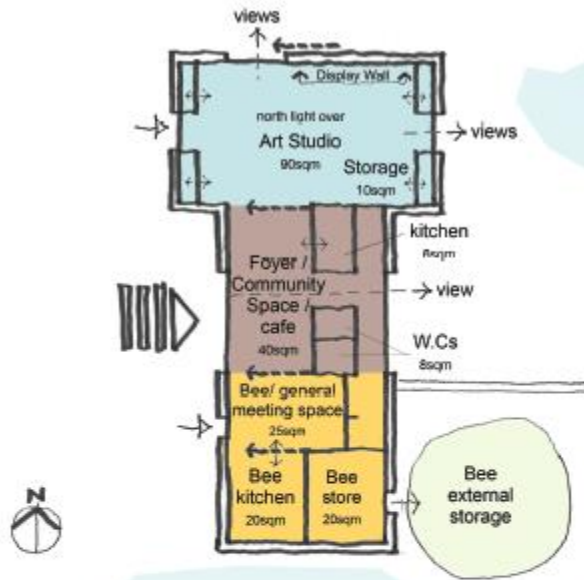
Artists and beekeepers

Building concept



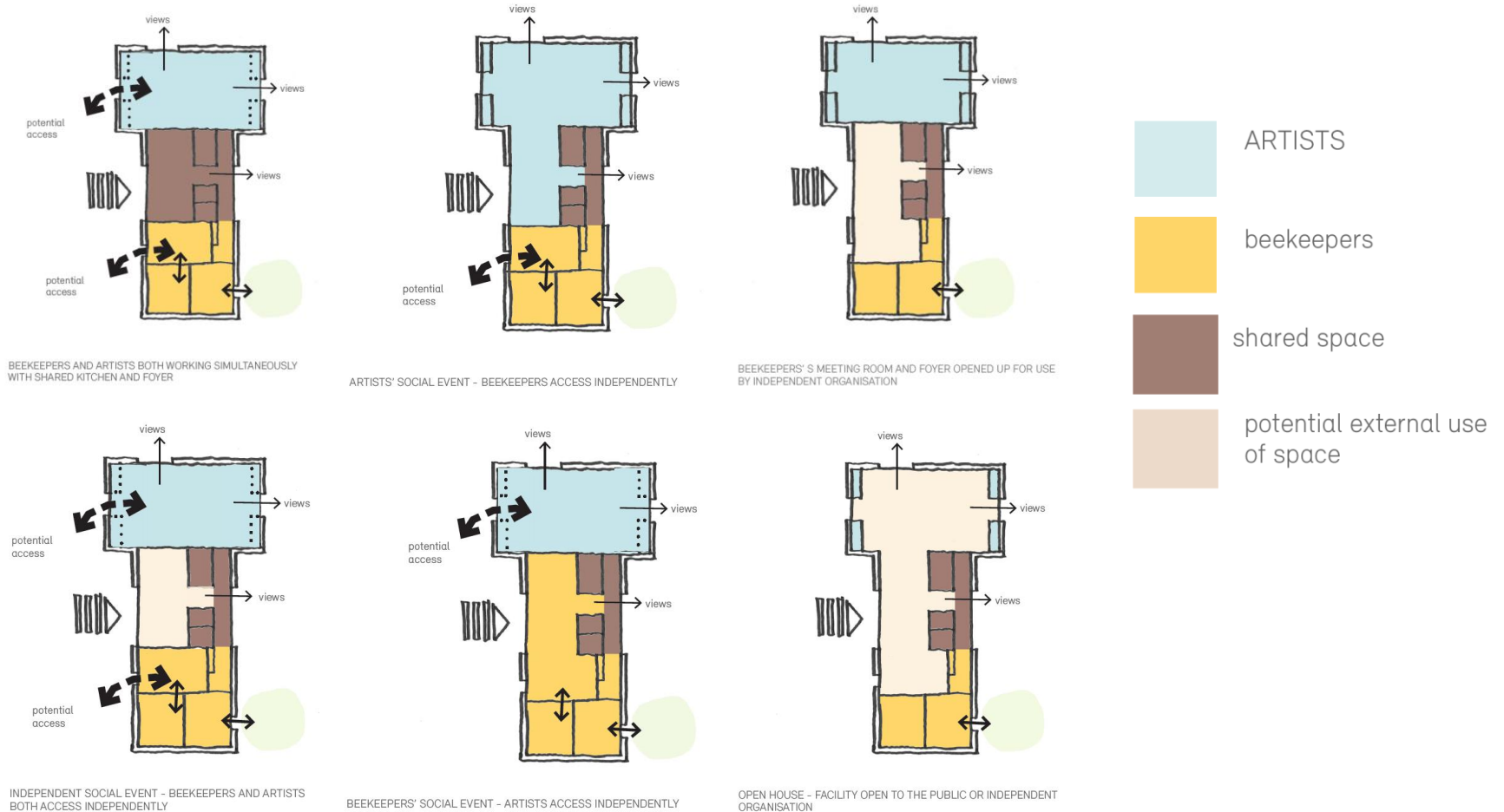
Artists and beekeepers

Layout



Artists and beekeepers

Possible in-use scenarios



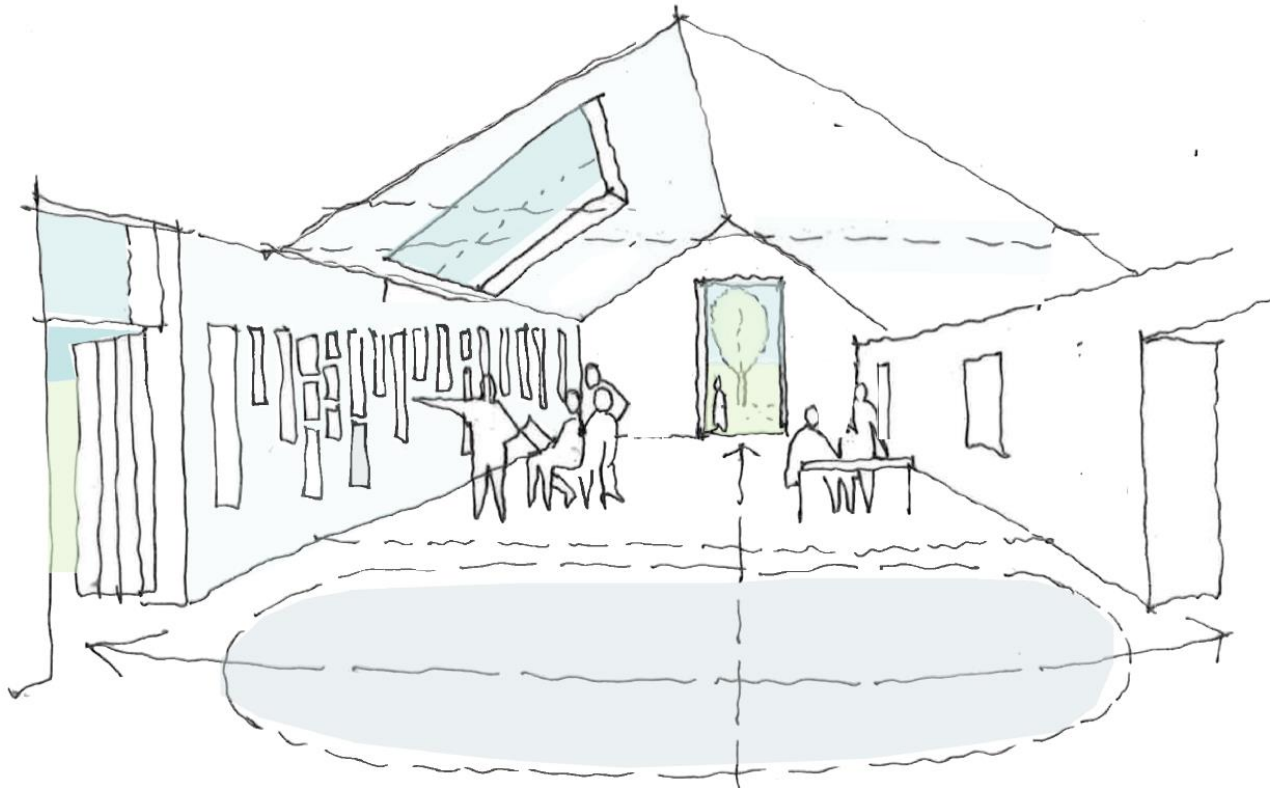
Artists and beekeepers

Precedents



Artists and beekeepers

Sketch perspective



Workshop sessions



-
1. Landscape and character
 2. Publicly accessible open space
 3. Housing layout and design
 4. Access and parking

Workshop 1

Landscape and character

The background of the slide features a large, abstract geometric design on the right side. It consists of several overlapping triangles and polygons in various shades of blue, ranging from a light sky blue to a vibrant, saturated blue. The shapes are arranged in a way that creates a sense of depth and movement, with some areas appearing to be in front of others. The overall effect is modern and clean, complementing the minimalist text on the left.

Workshop 2

Publicly accessible open space

Workshop 3

Housing layout and design

Workshop 4

Access and parking



Thank you for attending

whalebones-consultation.co.uk

